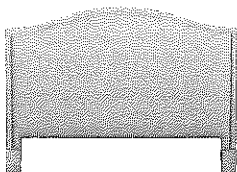


Bassett®

CUSTOM UPHOLSTERY BEDS

Step 1 Choose Your Style

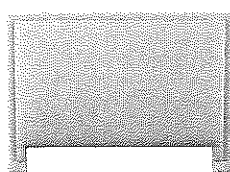


Vienna

Height: 60"-64"
Headboard only 1993
Complete Bed 1992

Options:

Diamond Tufted or
Non-Tufted
Fabric or Leather
Nailhead Trim
End of Bed Storage Drawer
Welting

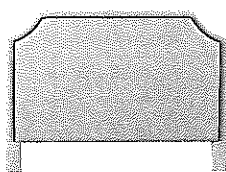


Manhattan

Height: 53"-57"
Headboard Only 1995
Complete Bed 1994

Options:

Diamond Tufted or
Non-Tufted
Fabric or Leather
Nailhead Trim
End of Bed Storage Drawer
Welting

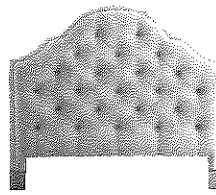


Florence

Height: 53"-57"
Headboard Only 1997
Complete Bed 1996

Options:

Diamond Tufted or
Non-Tufted
Fabric or Leather
Nailhead Trim
End of Bed Storage Drawer
Welting

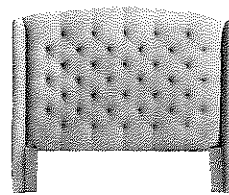


Barcelona

Height: 59"-63"
Headboard Only 1999
Complete Bed 1998

Options:

Diamond Tufted or
Non-Tufted
Fabric or Leather
Nailhead Trim
End of Bed Storage Drawer
Welting

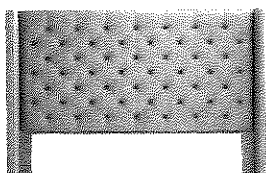


Paris

Height: 61"-65"
Headboard Only 1991
Complete Bed 1990
Block Style Leg

Options:

Diamond Tufted or
Non-Tufted
Fabric or Leather
Nailhead Trim
End of Bed Storage Drawer



Dublin

Height: 56"-60"
Headboard Only 2603
Complete Bed 2602
Block Style Leg

Options:

Diamond Tufted or Non-Tufted
Fabric or Leather
Nailhead Trim
End of Bed Storage Drawer

Step 2 Choose Your Size

T

Twin (39)

F

Full (49)

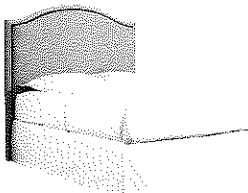
Q

Queen (59)

K

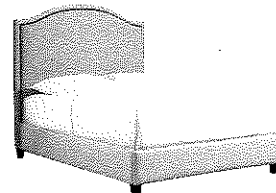
King (69) and
Cal. King (79)

Step 3 Choose the Configuration



Headboard Only

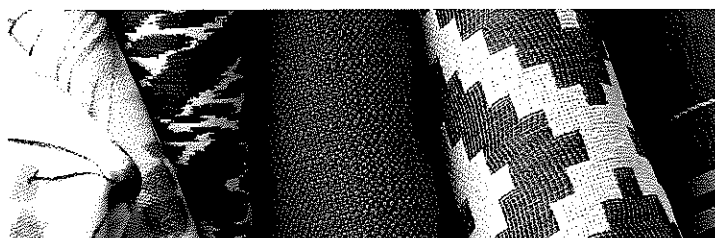
Metal frame or adjustable base
required for headboard only.



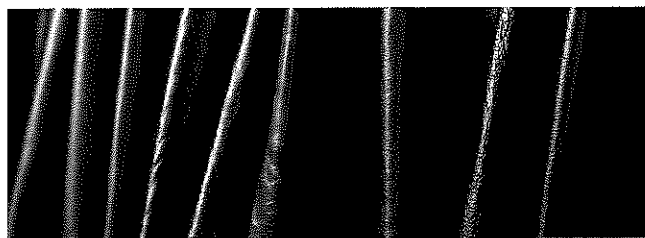
Headboard & Low Footboard

Most beds can accommodate many adjustable mattress mechanisms.
Ask for more details.

Step 4 Choose From 100's of Fabric or Leather



(Revolution Handle Same Price)



Step 5 Choose Your Nailhead (optional)



*Antique
Brass



*Oiled
Bronze

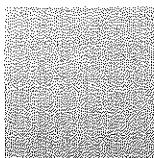


*Nickel

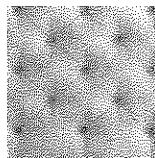
*Upcharge Applies

Step 6 Standard or Tufted

*Upcharge Applies to tufting



Standard



Tufted



Brindle

Step 7 Leg Finish